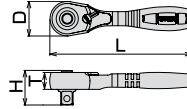


SHORT RATCHET HANDLE(SOCKET HOLD TYPE)

Models	Square Drive (mm)	Dimensions (mm)				Qty./ Carton (Generally)	Weight (g)
		D	H	T	L		
RH3HS	9.5	26.5	26.5	13.0	110	6	147



※ A repair kit (RK-RH3H) is available for separate purchase.
Please see P157 for details.
※ This product is registered design.



72-tooth gear with feed angle of 5°.
Efficient for narrow place with compact head.
Easy to detach / Holding socket tightly.
Exchange socket with one-push button.



Wedge type

Good Design award



RH3HS

Socket holding mechanism



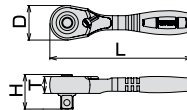
※ When attaching or removing, please make sure to pressing a push button.

SHORT RATCHET HANDLE, COMPACT HEAD(SOCKET HOLD TYPE)

Models	Square Drive (mm)	Dimensions (mm)				Qty./ Carton (Generally)	Weight (g)
		D	H	T	L		
RH3CHS	9.5	19.3	22.4	9.5	90	6	70



※ A repair kit (RK-RH3CH) is available for separate purchase.
Please see P159 for details.
※ This product is registered design.



72-tooth gear with feed angle of 5°.
Efficient for narrow place with compact head.
Easy to detach / Holding socket tightly.
Exchange socket with one-push button.



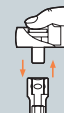
Wedge type

Good Design award



RH3CHS

Socket holding mechanism



※ When attaching or removing, please make sure to pressing a push button.

CAUTION

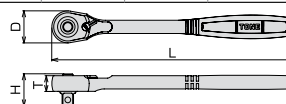
• Do not apply excessive force.

RATCHET HANDLE, COMPACT HEAD(SOCKET HOLD TYPE)

Models	Square Drive (mm)	Dimensions (mm)				Qty./ Carton (Generally)	Weight (g)
		D	H	T	L		
RH3CH	9.5	19.3	22.4	9.5	145	6	105



※ This product is registered design.



72-tooth gear with feed angle of 5°.
Efficient for narrow place with compact head.
Easy to detach / Holding socket tightly.
Exchange socket with one-push button.



Wedge type

Good Design award



RH3CH

Socket holding mechanism

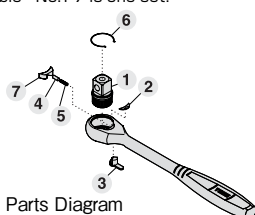


※ When attaching or removing, please make sure to pressing a push button.

Repair kit

RK-RH3CH

Suitable model : RH3CHS, RH3CH
Parts table No.1-7 is one set.



RH3CH Parts Diagram

RK-RH3CH Parts table

NO.	Descriptions	Qty.
1	Gear Assembly	1
2	Dust cap	1
3	Small Handle	1
4	Bush	1
5	Spring	1
6	Retaining Ring	1
7	Wedge	1

CAUTION

• Repair may be difficult for the general public.
• We do not sell parts by part.

CAUTION

• Do not apply excessive force on compact head.



For hand tool CAUTION

• Use ratchet handles slowly and softly.
• Switch over the direction completely.